

SIR ROBERT PATTINSON ACADEMY



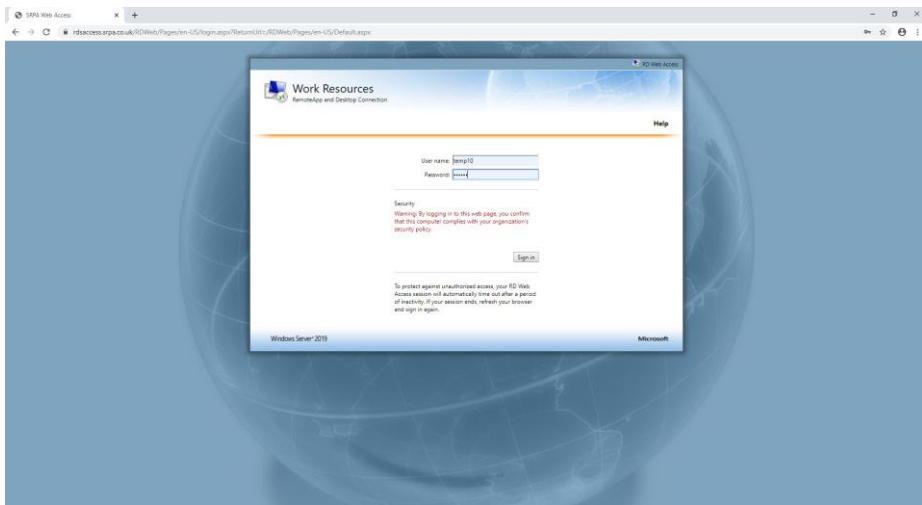
Desktop

REMOTE ACCESS—LOGIN PROCESS

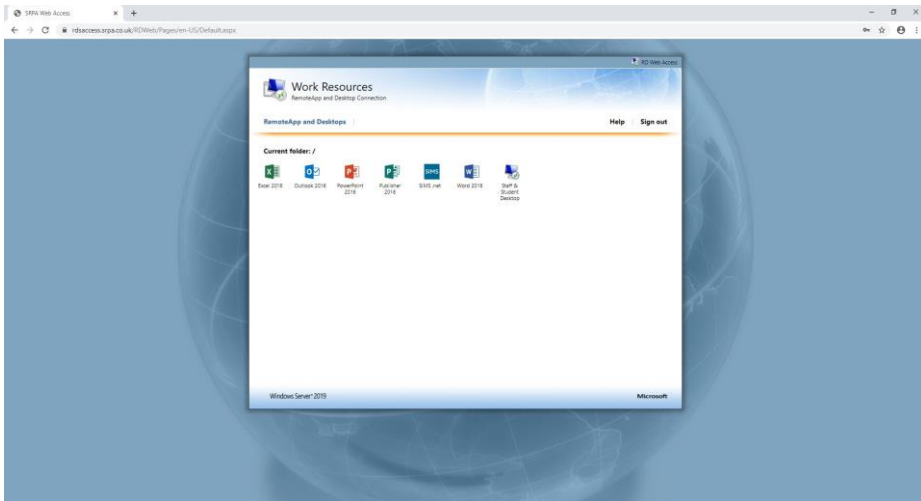
March 2025

Robert Pattinson Academy, Desktop Remote Access Process

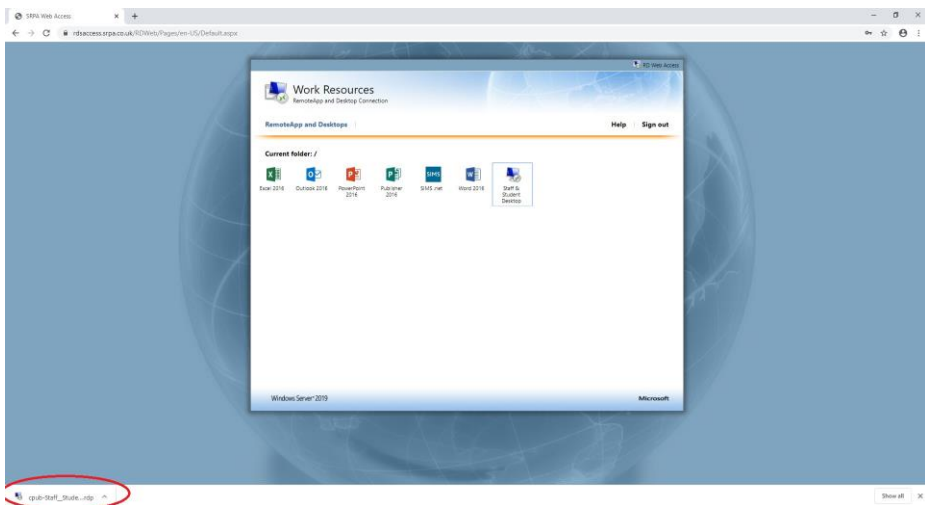
1. Open your web browser (i.e. Internet explorer)
2. Type in the address <http://rdaccess.srp.a.co.uk/RDW eb>
(There are links to this page located on the home page of the VLE or the school website in case you forget the address.)
3. Log in using your school username and password and click sign in.



4. Click the application you want to open.
(To log on to the school network click the 'Staff & Student Desktop')



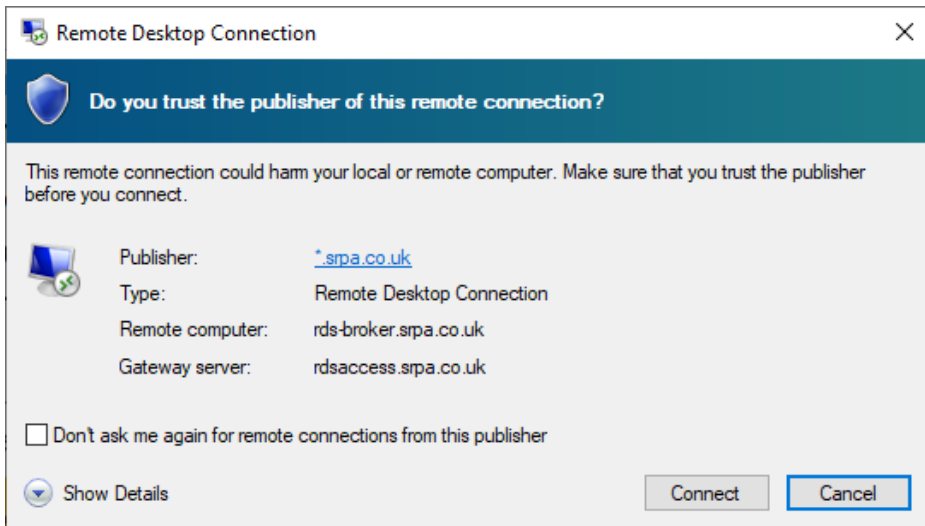
5. You will be promoted to download and save a 'remote desktop connection'. Click save and open it by clicking it (as shown red circled below).



(You can save this to a convenient location and use this for the next time you want to log on).

6. You will be prompted to connect and trust the 'publisher of this remote connection'.

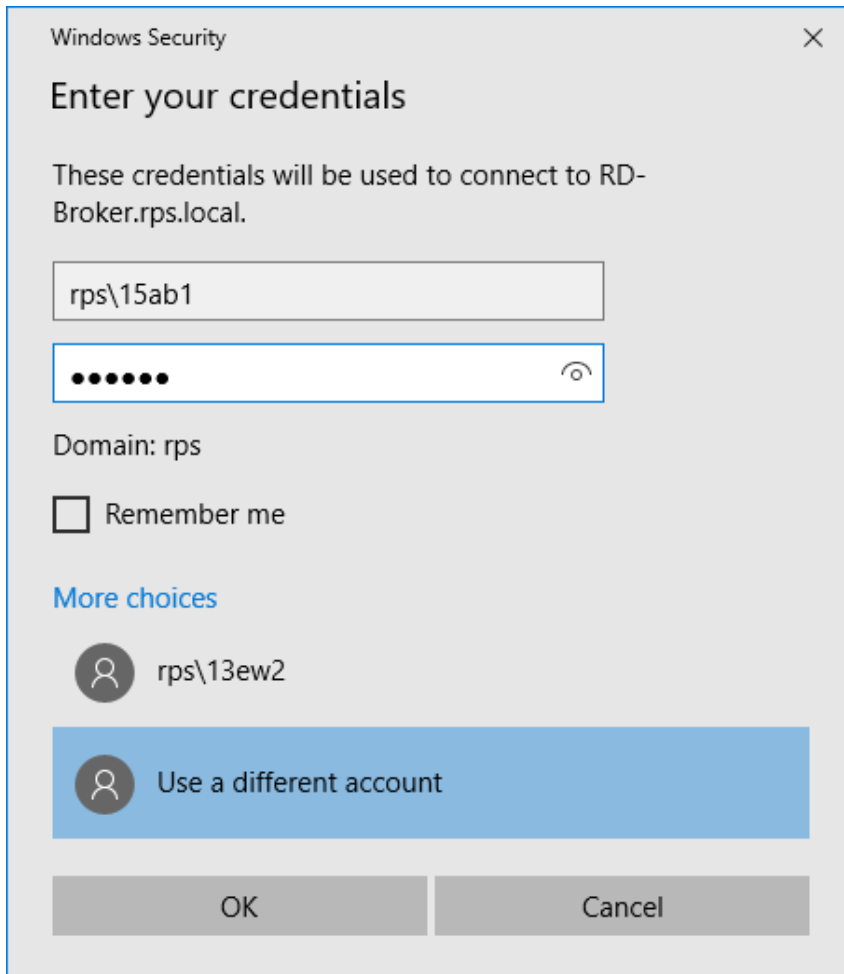
(if you tick don't ask me again for remote connections from this publisher, you will not need to do this on the computer you are using)



7. You will be prompted to log on again through the RDS-Broker.

Click on 'More choices', then 'Use a different account'.

Enter the school network name **rps** followed by your username and password, as shown below.



(if you click remember my credentials you will not be asked to log on to the RDS-Broker again)

8. Click OK to log onto the school network.



SIR ROBERT PATTINSON ACADEMY



If you experience any problems or have any queries please email itsupport@srpa.co.uk. Please supply screenshots and a description of the problem whenever possible.