

**Jubilee
Celebration
Assembly: The
Early Years**



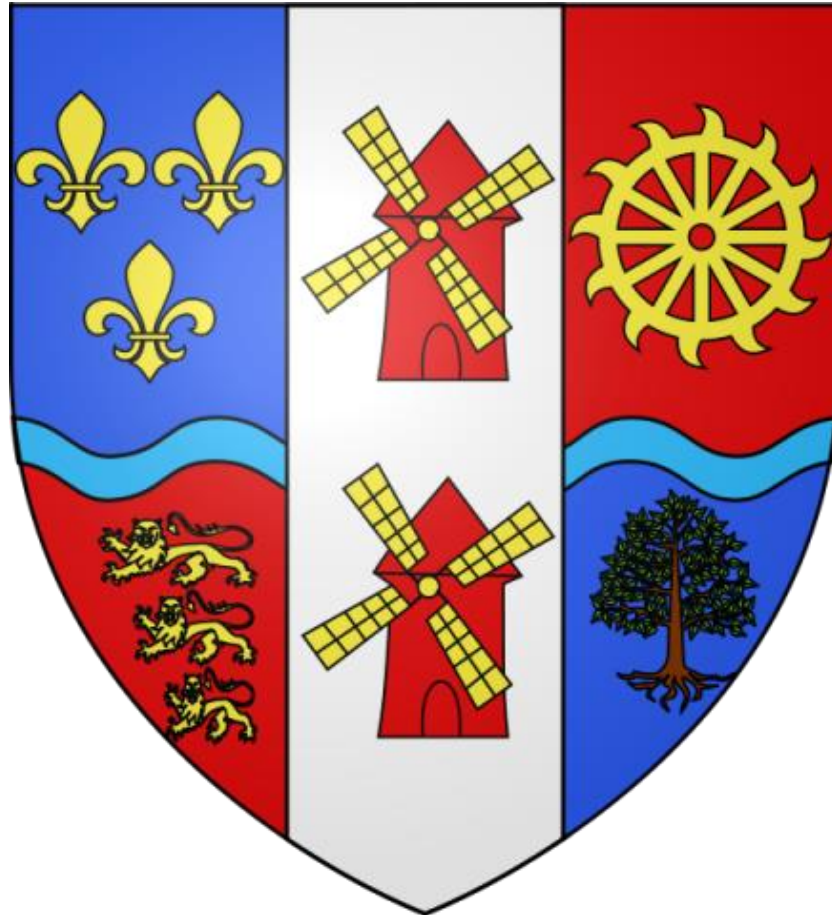
SRPA... the story so far...

Over the next two weeks, you will learn (or have already learned) about much of school's history during the past 70 years, its changes, its successes, and its journey towards excellence.

This assembly is designed to give you some insight into the early years of the school and how it developed to meet the needs of all those who have passed through its gates...



What does this coat of arms represent?



Let's consider North
Hykeham as it was...

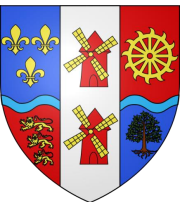


Station Road



Ladd's Mill (formerly on Mill Lane)

North Hykeham before WW2



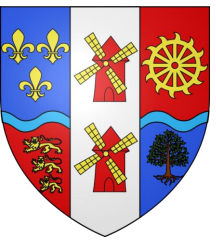


Village Green



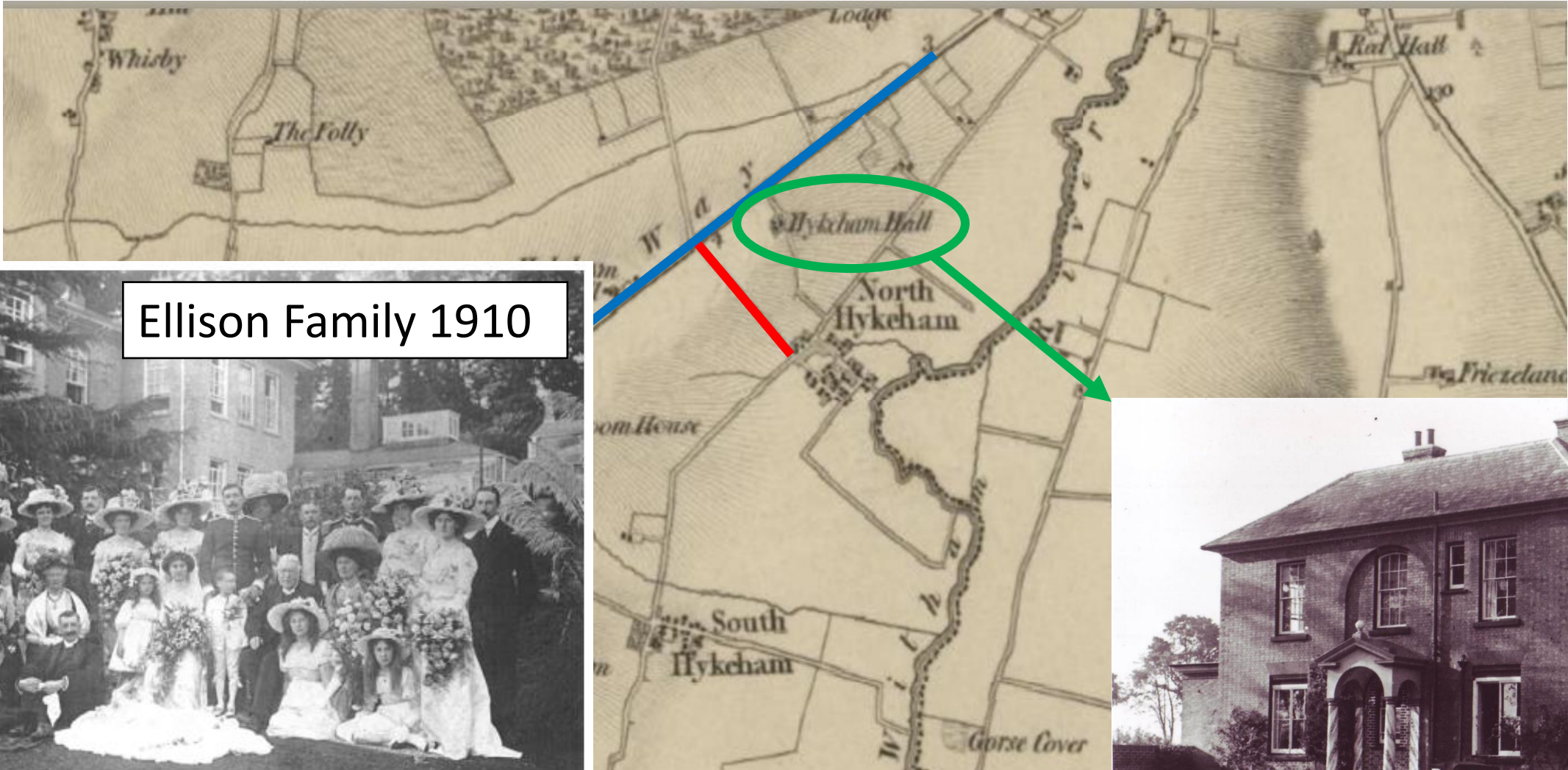
Moor Lane

North Hykeham before WW2



North Hykeham, c.1930

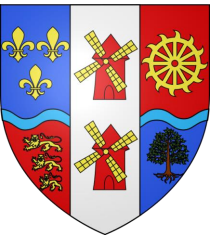
Newark Road
Moor Lane



Ellison Family 1910



A different view...





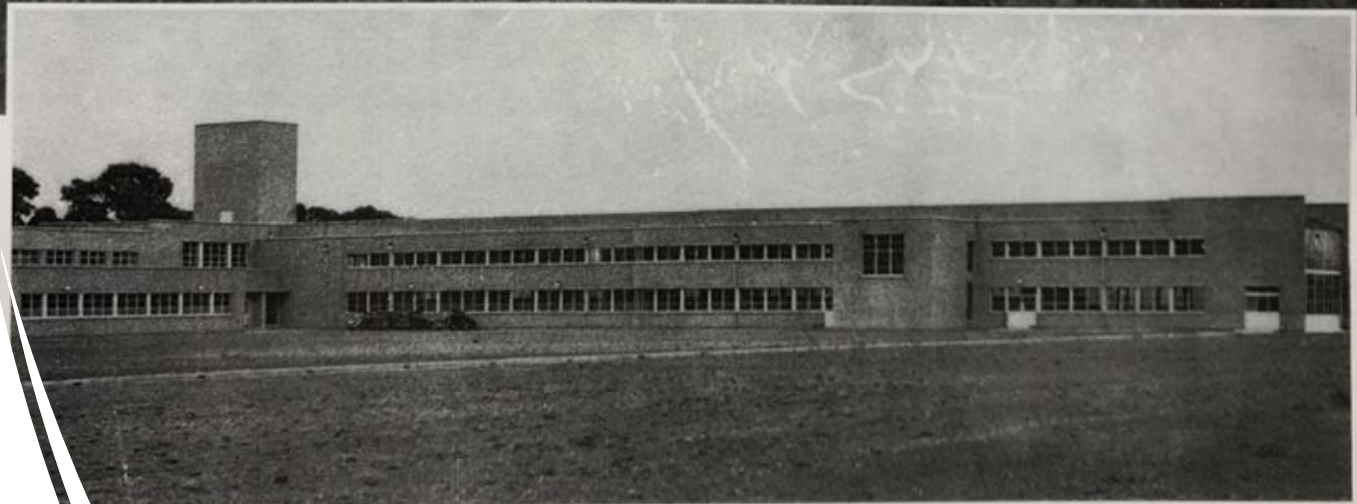
North Hykeham in 1950

North Hykeham today



1953 – a new school is built to meet the demands of the expanding suburban area

According to a G.W. Huston, one of the school's first ever governors, the school was built in the hope that it would *'help to put right a position where boys and girls of the rural areas had not been able to enjoy the same opportunities as the children in towns.'*





Some of Robert
Pattinson
School's first
ever pupils
(1954).



Much of the school's early focus was on rural life...

In 1954, in addition to spending a huge amount on Science equipment (£350 or approx. £12,000 in today's money!), the school spent the following monies on equipment for:

- £17 - History
- £30 - Geography
- £40 - Arts and Crafts
- £10 - Technical Drawing
- £15 - Woodwork and Metalwork
- £15 - Gardening
- £12 - Music

In 1954, the school was also given a tractor 'for use in the school workshop'; had established a 'Greenhouse' and an 'aluminium framed glasshouse' at the cost of £900 (approx. £33,000 today!) by 1956; planted an orchard by 1958; built a pottery room by 1959 (with hot running water); and established a Field Studies Course by 1960.



But, as you will see in R2L, the school quickly diversified and began to offer a very broad range of subjects and activities to students, adapting to the challenges of the twentieth century...

By 1962, the school had...

- Begun to offer free violin lessons to interested pupils
- Established a motorcycle safety course
- Provided housecraft courses for girls
- Purchased modern welding equipment for boys
- Established a garage and a dump for metal waste
- Built indoor gym facilities, an outdoor swimming pool and a coal bunker for the Science Department...



**Go-Kart Design,
early 1960s!**



Fast forward to 2023...

As the school moves into its eighth decade, we shall continue to meet the challenges of the twenty-first century and carry the good name of Academy out into the local community and beyond.

You, like your many of your forebears, are the very best of us, and we, your teachers and tutors, will do all we can to support you in your education, your development, your future.

